

Automatic Recognition Cars License Plates with Even Odd Check And State And City Detection.

Aanchal Mehta, Nancy bindal

Department Of Computer Science, Maharishi Markandeshwer University,
Haryana,India

Abstract: In era greater than ever the power of equipment show the way to growing the strength of moving structure arise the expertise in all field through as well rising the individual desires Automatic Recognition Cars License Plates With Even Odd Check With State and city Detect solitary of the foremost process for cars supervision A coordination is valid instant appliance exertion on involuntarily distinguish license plates of cars. This coordination be used in favor of countryside of protection and safety measures particularly freeway and Highway. this organism is functional on street traffic for instance classification and powers that be of the car owner and This scheme is moreover calculated to support establishment in identify the stolen cars since license plates include exclusive figure in order intended for cars . The organization is study of simulated intelligence, mechanism vision, and pattern neural network. Execution of this scheme is able to provide concrete outcome to illegal actions not curtail them. [1]

Keywords: Image Processing, Matrix lab.

Date of Submission: 15-01-2018

Date of acceptance: 27-01-2018

I. Introduction

In Modern World Technology introduced a significant role in present Life increasing the command of Transportation and makes use of Cars due to ordinary Human needs. Technology introduced new way to manage means of transportation predicament. They have power over in road grave traffic main road is extraordinarily concentrated occupation. There is more rapidly modifying in vehicular enlargement and superior amount of medium speedy on the freeways streets for each day in India. Intended for the given pathway of means of transportation travel it is required to remain tracking of medium on the orientation of their classification license plates. It significant device are used in dealings between hectic street and in sequence arrangement. This proposes the recognition of car license plate which is precise and vigorous in the direction of surroundings distinction. The License plates is unique information for cars. In real Environment needs Information between the real and road traffic monitoring system. Since a solitary in rank organization lacking several statistics has rejection importance they attempt on processor vision machinery. Automatic recognition Car License Plates are mostly used in Field of safety and security of cars. Automatic Recognition Car License plates is work on major effectively control on these busy traffic. Automatic recognition car license Plates system has become the most important application in the present in electronic Toll Collection. This can introduced by Intelligent Transportation system which recognize by License Plates in conceptual resources. Today various applications are built used in different places as Traffic rules, Parking area and Tracking of stolen cars and so on This application are use in several company to right of entry only allowed Personal. Automatic recognition car License Plates is famous by supplementary names as regular license plates recognition, automatic license plate reader, number plate trail, car plate recognition, vehicle numeral plate's recognition, automatic medium classification High Security Numbers Plates Recognition System (HSNPRS) vehicle plate detection system (VPDS) Optical Character Recognition (OCR) License Plate Recognition System (LPRS) etc. This organization used in every pace of the road traffic regulation.

These Types of applications understand characters and digits in License plates to detect in behind perfectly. These are involving the expansion in recognizing the car license plates. A lot of work has been done regard in Korean, European, Chinese, USA and many more countries and research work carries on Indian License plates. [2]

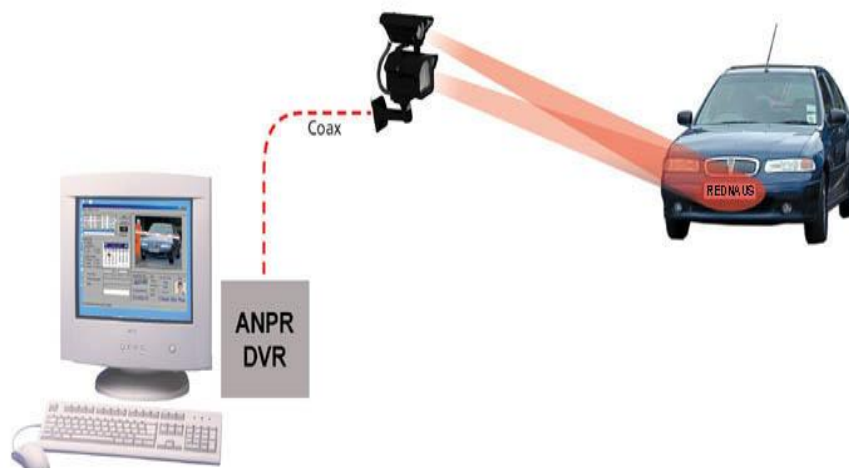


Fig 1.1 organize Systems [1]

In this manuscript they obtainable license Plate extraction with preprocessing then check License Plate Number is Even Odd traffic rules and State and city detection in license plate this classification used learning various Matlab algorithm [3]

Software-MATLAB R2013a MATLAB is higher programming language. It special developed by Math Works. Math Works is world's leading developer of technical computing software. Its major products include MATLAB . In additions tools are used for teach and research effort at worldwide. MATLAB provide statistics of tool boxes like as, Image processing, fuzzy logic, Neural Network, Graphical user interface etc. [4]

Graphical user interface - MATLAB directory by way of Graphical user Interface facade by way of conniving part. The Graphical user interface classically contains gearshift for instance menus, toolbars, buttons, and sliders, axes. Several MATLAB produce, for instance image Processing take account of purpose by way of custom user interfaces. [5]

2) Essentials of System Design.

Automatic Recognition of cars License plates is contains major set of components hardware and software from it. System usually consisting of the subsequent:

1) **Equipment:** - take icon of License Plates since both facade and sponsor end of cars.

2) **Elucidation:** - A prohibited luminosity tin can clear up and about the plate and allow sunlight and darkness process. An elucidation is imperceptible to the handler.

3) **Video digitizers:** - A crossing point connecting the equipment and the computer allow the software to examine the icon in order. [6]

4) **Mainframe:** - mainframe successively on Windows or operating system. It runs on application that direct system. Read the imagery and identifies the License plate, and interact with other appliance.

5) **Software:** - the identification pack up

6) **Hardware:** - a choice of participation and production board use to line the peripheral device.

7) **Catalog:** - The License Plates are record on a confined catalog or transmit above the arrangement the information include diverse penalty. [7]

II. Literature Work

1) **Pratiksha Jain et al (2014)** expressed that continual allow Plate location structure is a constant embedded framework which mechanically perceives the number plate of vehicle. The applications from multipart guard framework to incessant zone and from stopping to town activity oversee. Programmed tag acknowledgment (ALPR) has complexed because of various impacts, for example, of shine and speed. These frameworks are assembled apparatuses alike in Matlab. This record introduce a procedure of apply ALPR framework by means of Software tallying Python in addition to Open Computer Vision Library

2) **Jitendra Sharma et al (2014)** examined that figure of vehicle be illegal and administer by section resistance and trade running. The Plate extraction is by and large working in travel administration to perceive a vehicle whose proprietor has shamed movement law or to fid stolen vehicles. Vehicle License Plate acknowledgment and location is a system utilized as a part of exchange connected application for example pursuit of stolen vehicle, road exchange rules, speed checking, airplane terminal door observing, and parking

areas right of section sort out. It be improve the routinely expel the vehicle number plate from a caught picture. Number Plate Recognition strategy endured the issue of highlight determination handle. The current technique for number plate acknowledgment is generally point of convergence on restricted, add up to and Neural Network procedure of Feature Extraction and strategy for revealing. The Optimized Feature prepare enhances the revelation proportion of number plates.

3) **Savneet Kaur et al (2014)** the engine vehicle enlist cover recognize the rising locale inside advanced picture giving out. The number cover is recognizing with tape camera on assorted area utilized for takes after the travel. The method for transportation enroll cover distinguish in regular circumstance, yet the surroundings changes to overcast or raining then the operational of plan which identify the number plates of vehicle get affected. This exertion concentrates to detect the Register plates of vehicle in such encompassing conditions by method for reclamation system. Also this association change over the depictions to typescript which can be control for prospect.

4) **Salah Al-Shami et al (2015)** described the character recognition procedure is based on real license plates. The numbers are limited to ten classes (0-9). The recognition problem is a very important and many people work on implementing different methods. The successful set of methods to recognize characters from a closed set are the methods which use lines, but this method suffers from fact that the number of lines and thresholds for each feature in each line are selected manually for set of characters.

5) **Shikha Mahajan, Richa Dogra et al (2015)** examination on a scope of picture change method beforehand entire. From assessment, it sets up reachable fluffy based picture change system utilized adjustment thing statically too about the greater part of the method relies on positive predefined approach no contemplate on the substance or district in the concurred figure; so may disparity the shade of the yield figure

6) **Kiran Sonavane, ET, al (2015)** well ordered see and hear concerning the data of medium accepting stolen from stopping and starting somewhat additional position in urban communities. In this way, toward keep up method for stolen medium we expected to need to mount the CCTV on every sign in the district. Additionally introduce the numeral plate identification framework which can distinguish the whole number plate of every vehicle on exchange sign. For recognize vehicle figure plates present are so a considerable measure of calculation has been private yet dependably remain behind embryonic every yearly, In numeral plate location framework picture preparing plays a huge assignment, An applications comprise of fundamental operations preprocessing, picture change from RGB to Gray, apply edge discovery, and morphological administrators on indistinguishable picture then concentrate plate area from picture and last course the plate locale utilizing OCR (optical character Recognition).each calculation comprises basic strides, every calculation have a few downsides, since indistinguishable calculation can't live utilized for different environmental circumstance. The Algorithm's great association is completely depends ahead the estimation of enter similarity. E.g. pronouncement of camera, quality of the representation, elucidation of figure haziness results and so forth. In this paper we are concentrating on different calculation has been private to get the skill of the figure plate revelation framework. [8]

Implementation Details

The video is taken by the road cameras can be from facade or bring up end of the cars which are full of its license plate. They consist of incarcerate images of License plates. This approach used is

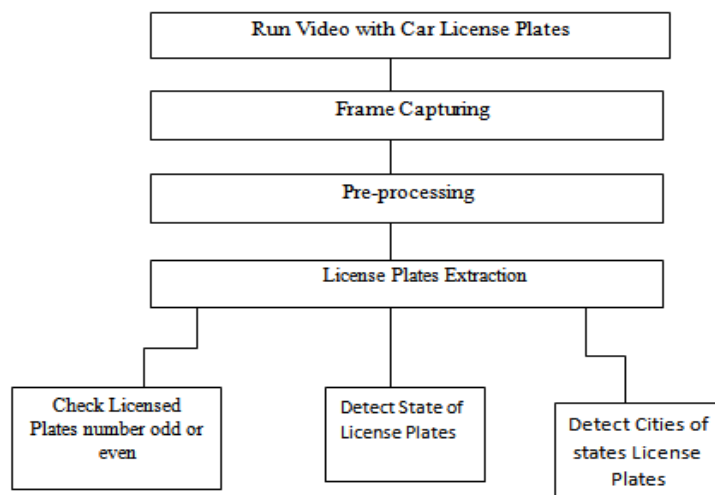


Fig 1.2 Design Layouts

Frame Capturing

The camera capture a video of License plates recognized video file convert into frame format. The frames are stored in selected Folder.

Pre-processing

In Preprocessing RGB image transformed into grey scale image for investigation. Median filtering is used removal of noise. Image improvement performance is used for sharpness of images morphological operations are used like erosion, dilation, eroded, filtered. Contrast enhancement using binary images therefore visibility of license plate is obtained.

License Plate Extraction

License Plate extraction is performing by extract the plate features present will recurrent make over in strength.

Even or Odd Check System

The system is base on odd-even rules to control traffic in public road and big cities give pollution free environment. Odd-even rules define with cars among odd license plates will participate going on odd dates those cars among even license plates will participate going on even dates Its detects cars license plates to give in sequence sink to transceiver . Odd cars number followed rules with odd dates or even cars number followed rules with even dates. When odd cars number and date is even then fine window is open in this system. The performance of system has been demonstrated which includes image processing techniques and processed algorithm followed by odd or even checks which is controlled by using Matlab interfaced by video and icons[9]

State Detection System

The system detect the state of nation .the state is written in license plates with English characters state detection tell us license plate number belongs which state in India .implantation is done by state detection algorithm in Matlab interfaced by video and icons. In India twenty-nine states .the system detect states Written in License plates [10]

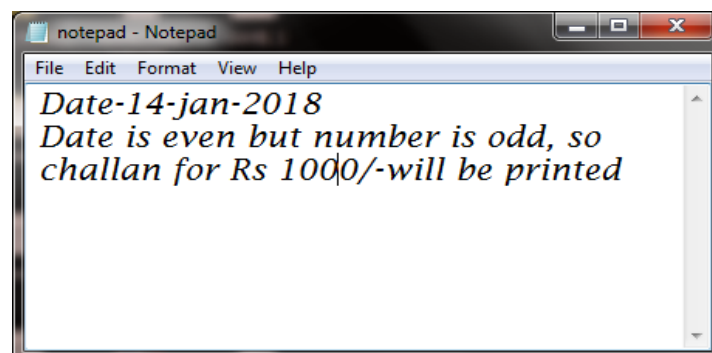
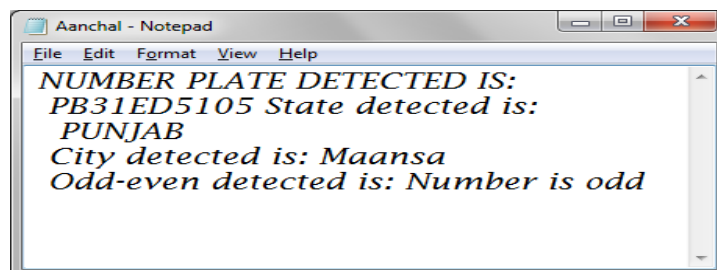
City code detection system

City code is the in order quantity of a locality. Payable toward weighty amount of License plates, the digits be agreed to the RTO headquarters of registration additionally. The system detect the cities of states .the city code is written in vehicle number plate with two digits mathematical numerical values .cities code detection tell us license plate belongs which cities in which state in India .implantation is done by cities detection algorithm in Matlab interfaced by video and icons . In India every state contains numbers of cities. Each city has unique assigned codes. [11]

III. Result And Analysis

This planned come near meant license plate extraction exertion fine used for every single one types of enter imagery (png, jpg, tif, etc). Whole cars imagery is experienced. Imagery is in use in dissimilar lighting setting. The pictures are full next to unlike reserve comparative toward camera in addition near be of dissimilar shades and unlike extents imagery. The planned technique exertions fine intended for small dissimilarity, strident with short declaration contribution representations.





Issue exactness fraction
Plate Extraction 97/100 96 %

IV. Conclusion

An algorithm for license plates extraction and segmentation is presented. Catalog of the icon maintain of imagery with dissimilar locale, illumination, camera angle, reserve etc. The trial outcome shows that license plates are extracted devotedly. The presentation of the residential of algorithms license plates Extraction along with license Plates Recognition is satisfactory range. The urbanized algorithms truthfully extract and recognize during dissimilar setting of the Indian license plates. The number plates are extracted and even-odd has been checked .State of the car is also detected and cities of states also detected. [12]

References

- [1]. Dening Jiang,Tulu Muluneh Mekonnen,Tiruneh Embiale Merkebu and Ashenafi Gebrehiwot, "Auto Plate Recognition System" in 2012 Fifth International Conference on Intelligent Networks and Intelligent Systems IEEE in 2012.
- [2]. Norizam Sulaiman, Sri or Hafidah Mohammad Jalani and Mahfuzah Mustafa, "Advancement of Automatic Vehicle Plate Detection System" inIEEE third International Conference on System Engineering and Technology, 19 - 20 Aug. 2013.
- [3]. Sarbjit Kaur and Sukhvir Kaur, "An Efficient Approach for Number Plate Extraction from Vehicles Image under Image Processing" in International Journal of Computer Science and Information Technologies, Vol. 5 (3), 2014 4] Pratiksha Jain, Neha Chopra and Vaishali Gupta, "Programmed License Plate Recognition utilizing Opens" in International Journal of Computer Applications Technology and Research Volume 3– Issue 12, 756 - 761 , 2014.
- [4]. Jitendra Sharma, AmitMishra, Khushboo Saxena and Shiv Kumar, "A Hybrid Technique for License Plate Recognition Based on Feature Selection of Wavelet Transform and Artificial Neural Network" in International Conference on Reliability, Optimization and Information Technology, IEEE 2014.
- [5]. Savneet Kaur, Kamaljit Kaur, Manvi and Rajdeep Singh Chauhan, "An Automatic System for Detecting the Vehicle Registration Plate from Video in Foggy and Rainy Environments utilizing Restoration Technique" in International Journal of Computer Applications (0975 – 8887) Volume 97 – No.20, July 2014.
- [6]. Saranya.K and AncyGloria.C, "Tag RECOGNITION FOR TOLL PAYMENT APPLICATION" in International Journal of Research in Engineering and Technology eISSN: 2319-1163 | pISSN: 2321-7308 in 2015.
- [7]. Salah Al-Shami, Ali El-Zaart, Rached Zantout, Amen Zakri ans Khaled Almustafa in, " A New Feature Extraction Method for License Plate Recognition" in IEEE, 2015.
- [8]. M.Yu and Y.D.Kim. "An Approach to Korean License Plate Recognition Based onVerticalEdge Matching," Proceedings of the International Conference on Systems, Man and Cybernetic2000, pp. 2975-2980.
- [9]. Jianbin Jiao, Qixiang Ye, and Qingming Huang, "A configurabe technique for mult style licese plate acknowledgment," Pattern Recognition, vol. 42, no. 3, pp. 358 369, 2009.
- [10]. Zhigang Zhang and Cong Wang,"The Reseach of Vehicle Plate Recogniton Technical Based on BP Neural Network," AASRI Procedi vol. 1, pp. 781, 2012.
- [11]. Ying Wen et al., "An Algorithm for License Plate acknowledgment Applied .
- [12]. Ying Wen et al., "An Algorithm for License Plate acknowledgment Applied to Intelligent Transportation System," IEEE Transactions of Intelligent Transportation System pp. 16, 2011.

----. "Automatic Recognition Cars License Plates with Even Odd Check And State And City Detection." International Journal of Engineering Science Invention (IJESI), vol. 07, no. 01, 2018, pp. 57–62.